



PORT OF KLICKITAT

For Immediate Release

October 11, 2011

Port Holds Public Hearings

Bingen, Washington – The Port of Klickitat will hold public hearings regarding its redistricting plan and 2012 budget at its regular port commission meeting on November 1, 2011, starting at 4:30pm. State law requires ports and other special-purpose districts that are not county-wide to redistrict after every decennial census. Redistricting refers to the process of recalculating the geographic areas from which each port commissioner is elected such that each area encompasses a reasonably similar number of constituents. As populations and population densities change, these geographic areas also change.

The Port is responsible for creating a redistricting plan describing how the commission districts will be altered and to present the plan at a public hearing before submitting it to the County. The draft redistricting plan calls for adjustments that would bring all Commissioner Districts to within one percent of each other in population.

Under this plan, District No. 1 would include 3,942 people in the voting precincts of Bingen, Fruit Valley, the southeastern part of North Fruit Valley, North White Salmon, and White Salmon. District No. 2 would include 3,861 people in the voting precincts of Appleton, East Klickitat, East Lyle, High Prairie, Lyle, the southern part of Mountain Brook, North Dalles, River, and West Klickitat. District No. 3 would include 3,904 people in the voting precincts of Glenwood, Husum, the north part of Mountain Brook, the north part of North Fruit Valley, the northwest corner of Pine Forest, and Trout Lake.

“Port staff have carefully created a redistricting plan that we think is simple, understandable, and meets the needs of the County and the requirements of the State,” said Jim Herman, Port Commissioner from District No. 1. “The upcoming public hearing gives our constituents the opportunity to tell us if they disagree.”

In addition to redistricting, the Port will also review a draft of its annual budget which describes the revenues, operating expenses, debt service, and expenditures for capital improvements projected for the coming year. Information on the Port's redistricting plan and 2012 budget can be obtained by visiting the Port office at 154 E Bingen Point Way, Bingen, Washington.

At A Glance...

Who:.....Port of Klickitat

What:.....Public Hearing

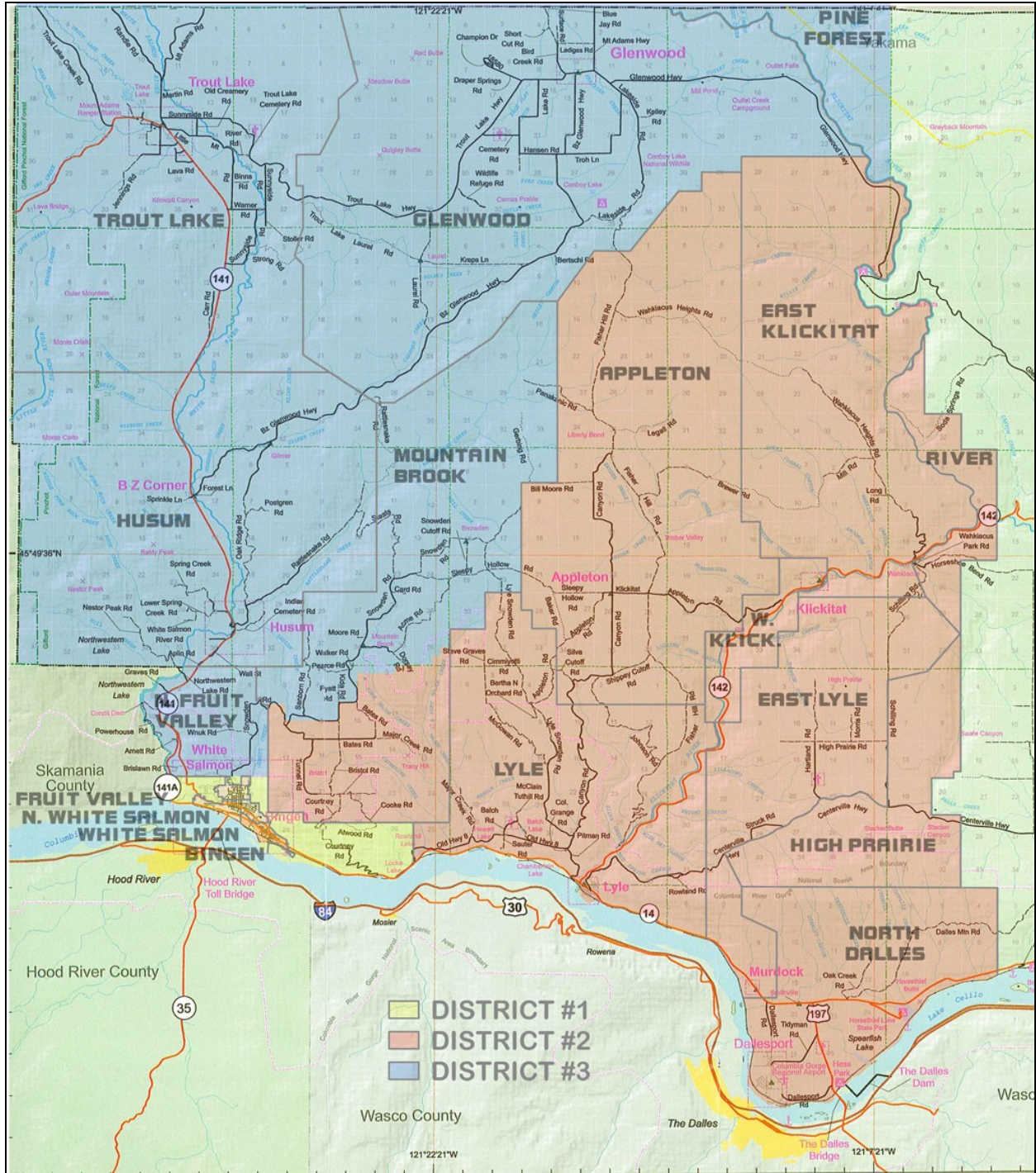
When:.....November 1, 2011

Where:.....Bingen, Washington

Quick Facts: Port to hold public hearings on its draft redistricting plan and its 2012 budget. More info. on the plan and budget can be obtained by visiting the Port office at 154 E Bingen Point Way, Bingen, Washington.

For more information, please contact:

Marc Thornsby, Executive Director ■ 509-493-1655 ■ mthornsby@portofklickitat.com



For more information, please contact:
Marc Thornsbury, Executive Director ■ 509-493-1655 ■ mthornsbury@portofklickitat.com

About the Port of Klickitat

Economic development, transportation, and marine-based recreation are key functions of the Port of Klickitat. These are achieved through leasing industrial-zoned property, developing and renting industrial and commercial facilities, developing and maintaining rail spurs and dock facilities, assisting companies with an interest in locating in Klickitat County, creating and managing marine-based recreational facilities, and working closely with various partner organizations and agencies.

The Port of Klickitat is located in Klickitat County, Washington and was created in 1944. It is one of several port authorities located in the mid-Columbia region. It owns two industrial parks and several buildings, leases industrial property and space, operates a barge dock, and holds property set aside for a park and marina. Transportation access is provided via rail, river barge, highways 14, 35, and 197, and Interstate 84.

For more information, please contact:

Marc Thornsby, Executive Director ■ 509-493-1655 ■ mthornsby@portofklickitat.com